

## Lightweight sections

## KL 3/4 to KL 3/8 and TKL 3/9

	Section modulus	Weight		Second moment of inertia	Section width	Wall height	Back thickness	Web thickness
	$W_y$ cm <sup>3</sup> /m	kg/m <sup>2</sup>	kg/m	$I_y$ cm <sup>4</sup> /m	b	h	t	s
	Wall	Wall	Single pile	Wall	mm	mm	mm	mm
KL 3/4*	<b>276</b>	<b>41.1</b>	31.6	<b>2042</b>	700	146	4.0	
KL 3/5*	<b>339</b>	<b>55.8</b>	39.1	<b>2502</b>	700	147	5.0	
KL 3/6	<b>410</b>	<b>66.0</b>	46.2	<b>3080</b>	700	148	6.0	
KL 3/7*	<b>460</b>	<b>78.0</b>	54.6	<b>3500</b>	700	149	7.0	
KL 3/8	<b>540</b>	<b>88.0</b>	61.5	<b>4050</b>	700	150	8.0	
TKL 3/9	<b>680</b>	<b>106.9</b>	74.8	<b>5120</b>	700	160	9.0	

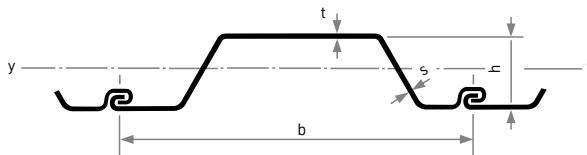
\*No section that is available ex stock.

Available lengths: up to 12 m (from 12 m to 14 m on request)

Warehouse lengths from 3 m to 8 m

The basis for billing is the weight of the single pile (kg/m).

## KL 3/4 to KL 3/8



## TKL 3/9

